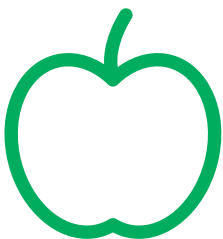


Program description



Immerse yourself in STEM (Science, Technology, Engineering and Maths) at The Orchard at Montague. Explore innovations in action through a guided tour of the state-of-the-art packing, cool storage and distribution centre. Participate in a hands-on orchard workshop, developing an understanding of plant features and adaptations for survival and the physical conditions that impact the growth and survival of different fruit varieties. Explore the roles of people in design and technologies occupations and learn about food waste and being a conscious consumer. Select your own delicious fruit to take home and enjoy!

Year

Year 3 – Year 6

Topics

- Features and adaptations of plants
- Food waste
- Consumer behaviour
- Water efficiency
- Use of technology in production
- Innovation
- Packaging, cool storage and distribution

Level

Level 3 – Level 6

Curriculum areas

- Science
- Technologies – Design and Technologies
- Maths
- The Humanities – Geography, History

### Excursion

Meet the tour leader at The Orchards at Montague at 10.30am. Engage in a hands-on guided workshop at The Orchard.  
Enjoy lunch in the beautiful natural surrounds before embarking on a behind the scenes tour of the state-of-the-art packing, cool storage and distribution facility. Depart on the school bus from Montague at approx. 2pm.

### Options

- Orchard workshop only – 1 hour
- Packing, cool storage and distribution facility tour only – 1 hour
- Orchard workshop and packing, cool storage and distribution facility tour – 2 hours
- Other options and inclusions can be scheduled according to availability.

### Duration

Half day (approx.10.30am – 2pm)

### Cost

- Midweek only – **\$12.50 per student**
- Midweek only – **\$15 per adult**
- Kindergartens/primary schools – we offer 1 staff free of charge (FOC) for every 10 students.
- Excursions are available during Victorian school terms.

### Food and beverages

It is recommended that students bring their own packed lunch and drink bottle to the excursion. However, there is range of food and beverages, including sandwiches, hot and cold drinks at The Orchard at Montague's café, Stella's Restaurant. Pre-ordered and purchased kids' packs are also available.



### Toilets

Toilets are located in the main building between Stella's Restaurant and Bill's Orchard Gate retail store.

### Parking

Free bus and car parking is available at the front of Stella's Restaurant.

### Accessibility

The Orchard at Montague is committed to offering an enjoyable excursion experience for everyone and has a range of accessible facilities available. Please contact our friendly staff if additional information is required.

### Curriculum, staff and ratios

Our education programs are linked to the Victorian Early Years Learning Framework (VEYLDF) and the Victorian Curriculum. Programs are presented by passionate tour leaders, who hold a level 2 first aid qualification and Working with Children Check. The APAL education program aligns with the Victorian Department of Education and Training excursion ratios.

### Curriculum links

#### The Technologies – Design and Technologies

Recognise the role of people in design and technologies occupations and explore factors, including sustainability, that impact on the design of solutions to meet community needs (VCDSTS023).

Investigate characteristics and properties of a range of materials, systems, components, tools and equipment and evaluate the impact of their use (VCDSTC037).

Investigate food and fibre production used in modern or traditional societies (VCDSTC025).

Investigate food preparation techniques used in modern or traditional societies (VCDSTC026).

Investigate how and why food and fibre are produced in managed environments (VCDSTC035).

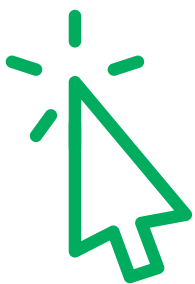
Investigate the role of food preparation in maintaining good health and the importance of food safety and hygiene (VCDSTC036).

#### Science

Different living things have different life cycles and depend on each other and the environment to survive (VCSSU058).

Living things have structural features and adaptations that help them to survive in their environment (VCSSU074).

The growth and survival of living things are affected by the physical conditions of their environment (VCSSU075).



### Bookings/ enquiries

Phone: (03) 9658 5913

Email: [events@montague.com.au](mailto:events@montague.com.au)

Location: 18 Horswood Road, Narre Warren North, Victoria 3804

Keep in touch: [montague.com.au](http://montague.com.au)